



HARBINGER NO-STICK SHURLOCK INSTALLATION GUIDELINE



MATERIALS

NSS is completely recyclable. While we are FloorScore certified our independent emission tests prove that we exceed by **5 times** the requirement needed to pass the FloorScore program or LEED certification or The CRI Green label certification program. Made from 100% Virgin PVC with a Fiberglass stabilized core, Harbinger guarantees that all products are Phthalate free, Phenol Free and do not contain heavy metals to assure the best indoor air quality at home and in the workplace. No-Stick Shurlock (NSS) is suitable for all interior floor surfaces, above, on or below grade, and over concrete, wood or properly prepared existing substrates. Harbinger contributes to earning LEED® credits. NSS is manufactured under ISO 9004:2008 Quality Management System and ISO 14001 Environmental Management System.

STORAGE AND ACCLIMATIZING

NSS should be acclimatized at least 48 hours prior to installation. Always store the product on a flat and level surface. Never store the product on its sides. Remove material from packaging, spread out if possible and allow to condition in room where installation is to take place at a constant temperature of 18°-25°. This temperature should be maintained during installation, and an additional 24 hours after installation.

PRODUCT INSPECTION

Prior to installation, carefully inspect material for any visible flaws. Damaged or flawed material should never be installed under any circumstances. If flaws are detected, immediately contact Bay Resource Group. Installation of material implies acceptance. **DO NOT INSTALL DEFECTIVE MATERIAL.**

SUBFLOORS

All supporting surfaces shall be structurally sound, solid, stable, level, plumb and true to a tolerance in plane of 1/4" in 10 feet (6 mm in 3 m) for floors. Subfloors shall be dry, clean and free of dust, oil, grease, paint, tar, wax, curing agent, primer, sealer, old adhesive or any deleterious substance and debris.

1. Concrete Substrates

NSS may be installed over on grade, above grade or below grade. Concrete floors shall be constructed in accordance to local construction standards. Concrete shall have a minimum compressive strength of 3500 psi. Installation of a moisture vapour-barrier is recommended prior to pouring of on or below grade slabs. Moisture vapour transmission shall not exceed 5lbs / 1000 sq.ft./ 24 hours (2.3kg/ 92.9 sq.m./ 24 hours) per ASTM F-1869. Moisture may also be tested according to ASTM F2170; when tested according to this method, the internal relative humidity shall not exceed 85%.

2. Wooden Subfloors

Suitable wooden subfloors include 3/4"(19mm) exterior grade and APA approved plywood, flooring grade OSB . The panels must have a fully sanded face and deflection shall not exceed 3/64" (1.1mm). These subfloors must be clean, structurally sound, dry, smooth and level.

3. Other Substrates

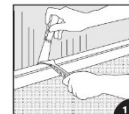
Quarry tile, terrazzo and ceramic tiles are suitable substrates provided there are no irregularities, damages, and that they are flat and level. Any embossing or grout joints must be leveled off with a Portland based leveling compound. Existing single layered resilient is also suitable provided it is not cushioned and is well bonded to the subfloor.

4. Radiant Heated Floors

NSS may be installed over radiant heated floors provided the operating temperature never exceeds 80.6°F (27°C). The system must be in operation for three weeks prior to installation of the flooring. 48 hours prior to and during installation, the system must be kept at 65°F (18°C) Once the installation is completed, the heat must be gradually increased by a maximum of 5°F (3°C) per day until the desired setting is reached.

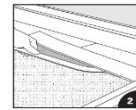
INSTALLATION

1. Remove thresholds and baseboards before you measure the room to calculate how much flooring to purchase. Your surface to cover will be the length times the width of the room plus the area of any nooks and closets. To this total surface, you will need to add 5%-10% for trimming. We recommend to keep a few planks for replacement should any planks become damaged.



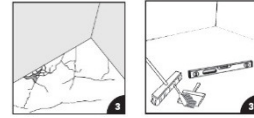
HARBINGER NO-STICK SHURLOCK INSTALLATION GUIDELINE

- Strip the existing flooring if necessary. If the existing floor surface is solid and smooth, you may choose to skip this step. If you remove carpet or old vinyl, you may need to use a power scraper and citrus-based solvent to remove old adhesive without omitting corners and crevices.

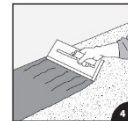


INSTALLATION

- Use a patching compound to fill in any cracks and holes in the subfloor. Work the compound into the hole with a putty knife and level it off. Once you have a smooth, even surface, sweep or vacuum the subfloor thoroughly.



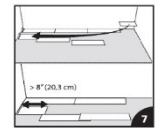
- For Residential installations NSS must be perimeter fixed using a strip of Min 12in. (30cm) pressure sensitive glue such as Harbinger S700. The planks are to be fitted tightly to the walls. In areas where there may be heavy traffic such as a hallway, areas exposed to direct sunlight and areas where there may be wheeled traffic, a full spread adhesive method is recommended.



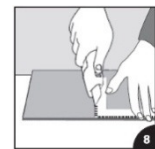
- If a room is greater than 13ft (4m) in any dimension, a grid pattern of adhesive is required. A strip of 12in. (30 cm) must be applied in both directions in the middle of the room. In even greater areas, a grid pattern of adhesive must be applied every 10ft. x 10ft. (3m x 3m).
- Additional adhesive should be used at areas of potential movement such as near appliances, stair landings, doorways and pivot points. The floating planks and the glued down planks may be installed in tandem wherever the need for adhesive is required. Make sure to apply the adhesive only when you are ready to install the planks over it, abiding to the adhesive's open time. Usually 30-45 minutes when adhesive does not transfer to touch.

- For Commercial or high traffic areas** or areas with rolling loads such as wheelchairs or carts, full coverage adhesive application must be applied. Planks should be placed into adhesive when dry to touch so as to allow 90% transfer of adhesive after rolling.

- Starting from one corner of the room, lay down the first row of planks moving towards the other wall. Since these planks do not have any particular direction, they can be installed either from left to right or from right to left. Make sure to apply pressure so the planks adhere well to the floor.



- When placing the second row and every subsequent row make sure to stagger the end joints a minimum of 8 in. (20 cm) apart from the previous row. Staggering the vinyl planks creates a more authentic appearance. In order to accomplish this, you may need to cut a plank to start a row. Ends that have been cut should be pieced against the wall. Use a vinyl plank cutter (recommended) or a utility knife and square to cut the plank at a 90-degree angle to its length. Planks that are against the wall also need to be a minimum 8 in. (20 cm) in length. Make sure there are no gaps between the planks, they must be fitted tight to each other on all four edges.



- Should there be adhesive residues on the surface of the floor, use a clean white cloth dampened with water if adhesive is wet and acetone or mineral spirits if it is dry to wipe it away.

CARE AND MAINTENANCE

- All windows that may provide direct sunlight and the floor must have proper blinds or shades installed. During hot summer days, the ambient heat combined with the heat from the sun's rays may affect the installation. During these days, blinds or shades must be used to protect the flooring.
- For everyday cleaning, use a vacuum cleaner with wand attachment, a sweeping broom or a good quality microfiber mop and water.
- Only use cleaning products that are specifically recommended for vinyl floors and are certified PH neutral.
- DO NOT CLEAN YOUR FLOOR WITH ABRASIVE CLEANSERS. ABRASIVE SCRUBBING PADS OR SCOURING POWDERED PRODUCTS.**
- Any spills need to be removed right away.
- Use appropriate mats at entryways to collect tracked-in dirt, sand and pebbles and to absorb moisture.
- Furniture legs (chairs, tables, cabinets, etc. should have protective pads at their base, while office chairs should have soft wheels.
- Care is also required whenever furniture is moved. Furniture should never be dragged across the floor. Use appropriate moving pads or dolly if required.